

## Operating instructions

The product usually requires no user interaction. If you open the enclosure, e.g. in order to replace the batteries, unscrew the four plastic screws and carefully open the lid.

**CAUTION:** Make sure the sensor unit does not drop out of the enclosure while opening! Do not touch the electronic components and sensors!

## Replacing batteries

Insert 2 high-quality alkaline C batteries (R14) into the battery holder on the back side of the sensor unit. The device operates until the battery voltage drops to about 2 V. Always replace both battery cells with two identical fresh batteries.

## Operating modes

The device has three operating modes:

- **Reset:** System (re-)start; both LEDs light up for a short time.
- **Active mode:** Periodic measurements and data transmissions; green LED flashes for each measurement.
- **Test mode:** Measurements and data transmissions at fastest possible rates; blue LED is on. **CAUTION:** use only momentarily, e.g. for testing the wireless connection.
- **Sleep mode:** No measurements and data transmissions (power save mode).

## User button and LEDs

The user button allows to switch between the operating modes as shown in Illustration 1. To perform a device reset, switch to sleep mode first (if necessary) by pushing the button for 3 seconds (until LEDs flash three times); wait 3 seconds; then push the button for 3 seconds (until LEDs light up). To switch between active and test mode, push the button for 1 second (blue LED on / off). If the blue LED is off, the device is in active or sleep mode. If the blue LED is on, the device is in test mode. To check whether the device is active or in sleep mode, push the button twice for 1 second; if the blue LED goes on and off, the device is in active mode; otherwise, the device is in sleep mode.

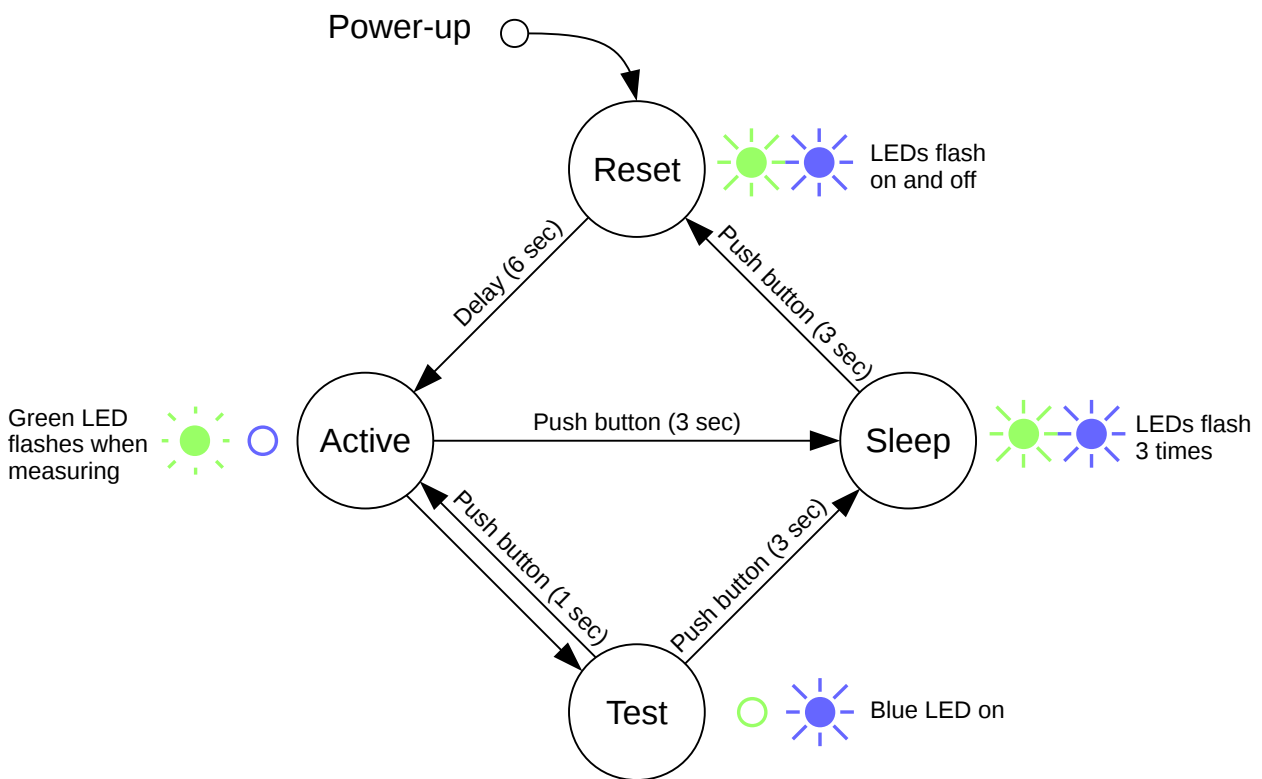


Illustration 1: Device operating mode state diagram.

## Mounting instructions

Mount the device in upright position, the cable gland facing downward. Prefer a mounting location which is protected against rain and direct sun radiation.

For best radio performance, position the device in such a way that the device lid faces roughly in the direction of the next gateway. Avoid metallic objects close to the device.

The housing includes 4 threaded bushes (M4) in a 90 × 60 mm rectangle (see Illustration 2). This enables easy installation using standard M4 bolts.

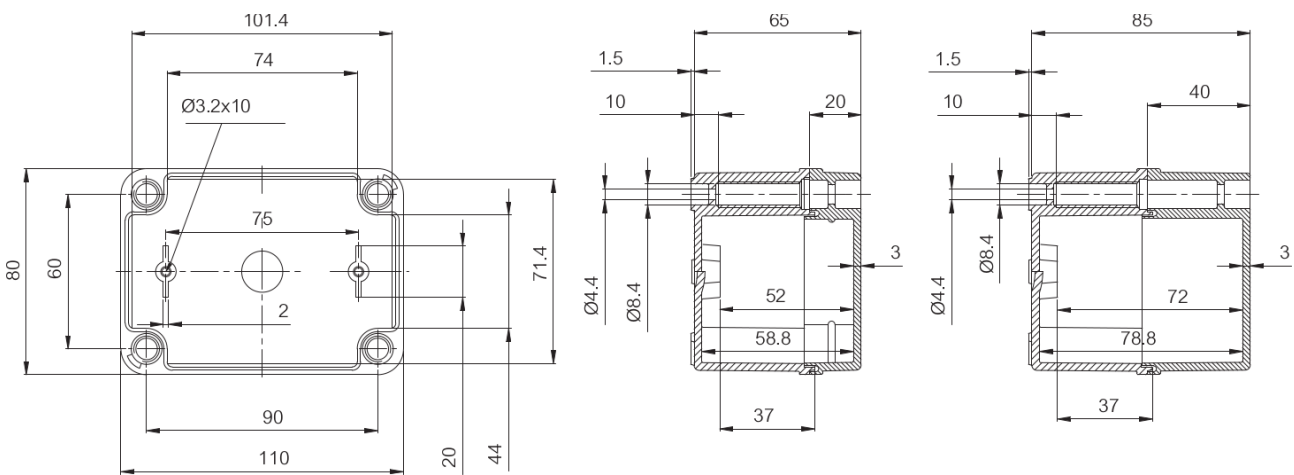


Illustration 2: Housing dimensions. Note: Drawing not including cable gland. Dimensions in mm.